



## **How to Link IP Camera when Calling on SIP Phone**

<b>Title:</b>	How to Link IP Camera when Calling on SIP Phone	<b>Version:</b>	V1.0	<b>Date:</b>	11/16/2022
<b>Product:</b>	Video Intercom			<b>Page:</b>	1 of 1

## Preparation

---

1. The IP camera must support RTSP protocol for live view.
  2. Suitable model: DS-KP8000-HE1/ DS-KP8000-WHE1/ DS-KP8200-HE1/ DS-KP9301-HE1
- Note: maximum support 1920\*1080 and H.264 IP camera, if the video stream resolution is higher or H.265 encoding, it will live view failed on the SIP phone.

## How to Link IP Camera when Calling on SIP Phone

---

Login SIP phone web interface, enter *Line--Action Plan* and configure the linkage

### Parameter explanation:

**Number:** Number or IP on the other side (supports the same number expression as dial plan)

**Type:** When to live view the camera video, **Early** means before answer the call, **Connected** means after.

**Direction:** Both, incoming call or outgoing call

**Line:** Select the line which you want to link the IP camera live view

**Username and Password:** keep them empty, we will include them in the url

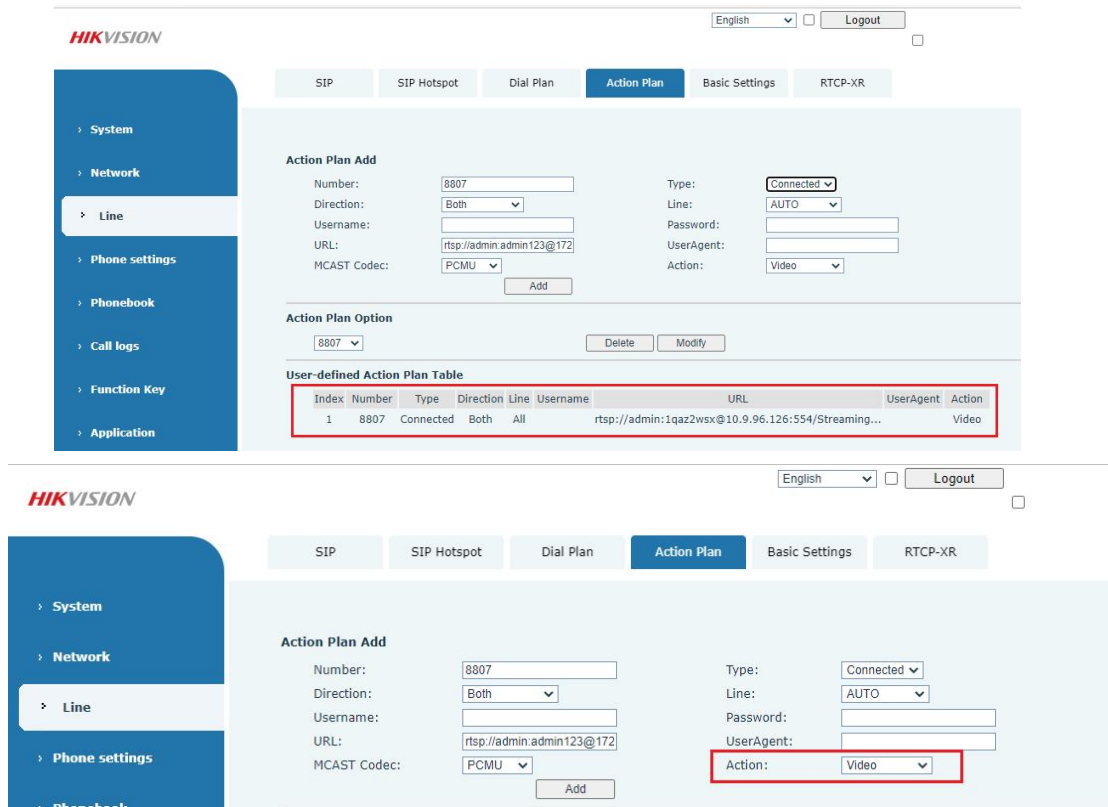
**URL:** input the RTSP command, for example

Main stream: rtsp://admin:admin123@172.18.9.200:554/Streaming/Channels/101

Sub stream: rtsp://admin:admin123@172.18.9.200:554/Streaming/Channels/102

**Action:** live view camera linkage select Video

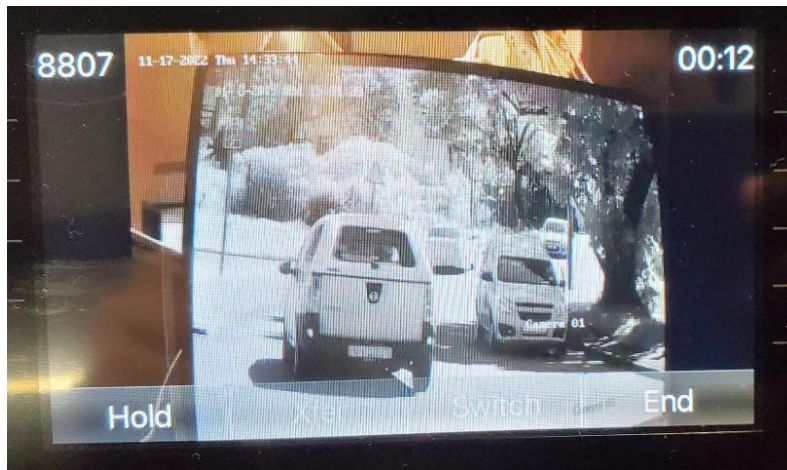
<b>Title:</b>	How to Link IP Camera when Calling on SIP Phone	<b>Version:</b>	V1.0	<b>Date:</b>	11/16/2022
<b>Product:</b>	Video Intercom			<b>Page:</b>	2 of 2



If you set the type as **Connected**, when number 8807 device call the SIP phone or call 8807 from SIP phone, after answer the call, you can see the linked IP camera on the screen.

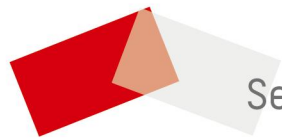
*Note: DS-KP8000-(W)HE1 and DS-KP8200-HE1 support connected mode only.*

<b>Title:</b>	How to Link IP Camera when Calling on SIP Phone	<b>Version:</b>	V1.0	<b>Date:</b>	11/16/2022
<b>Product:</b>	Video Intercom	<b>Page:</b>	3 of 2		



If you set the type as **Early**, when the call comes or call number 8807, no matter answer or not, you can see the linked IP camera on the SIP phone.





See Far, Go Further